

NYDA[®]

NO MORE NITS

KILLS IN
1 HOUR

Check For Head lice by following these four simple steps:

1

Comb the person's hair

Thoroughly with the special lice comb, parting the hair into strands. Conditioner can help the comb slide through the hair.

2

Wipe the Comb

clean on tissue or paper towel after each stroke.

3

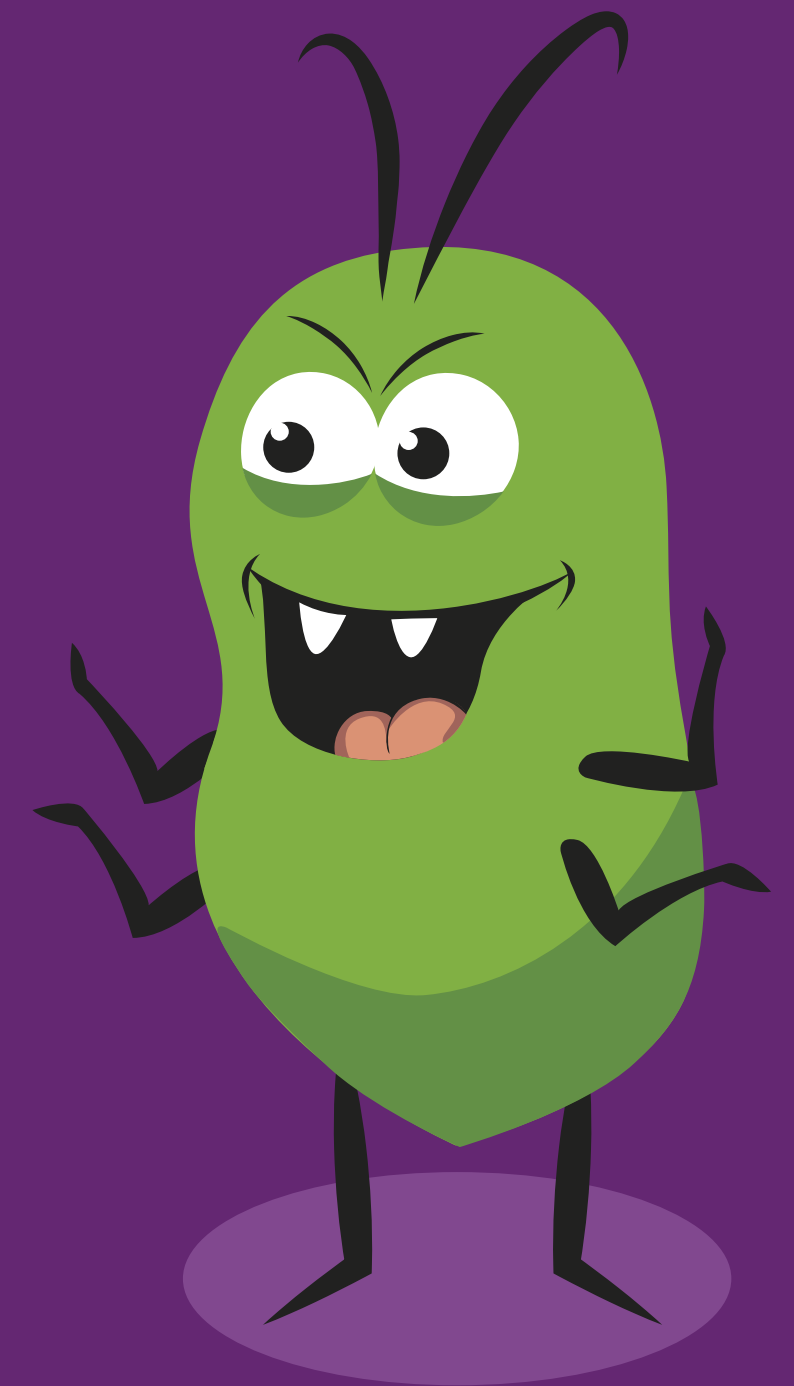
Check

the tissue for eggs or lice

4

Treat Immediately

if eggs or lice are found - treat immediately using NYDA[®] or NYDA[®] Plus.



TIP: Check behind the ears - it's a favourite spot for headlice to live